

GARDIFF Epos

10inch Multi-function Mobile Tablet



GARDIFF Epos

Features



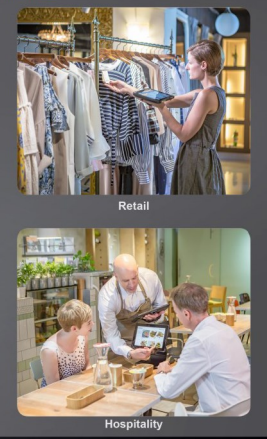
Service Cradle



Service Station



Application



Model	Android	Windows
Processor	Intel Cherry Trail Quad Core Atom X5 Z8300 1.44G (Turboboost to 1.84G)	
System Memory	DDR3 2G	DDR3 4G
Power Supply	10W (5V / 2A)	
Built-in Storage	eMMC 32G	eMMC 64G
Second Storage	Micro SD Card Slot (Max:128GB)	
Speaker	2 x 1W Internal Speaker	
Camera	Front: 2 MP / Rear: 8 MP (Optional)	
Battery	6800mAh (Built-in)	
Connection	Wifi 802.11b/g/n 2.4Ghz; Bluetooth 4.0	
Construction	Plastic	
Touch LCD Display		
Size / Resolution	10.1" IPS / 1280 x 800	
Brightness (Backlight Type) & Touch Screen	350 cd/m2 (LED); Projected Capacitive (Multi-touch)	
Service Cradle		
Optional	MSR / IC Card Reader / 2D Barcode Scanner / NFC / Battery / 1 x USB 2.0	
Service Station		
USB Port	2 x USB 2.0; 1 x USB 3.0	
Cash Drawer Port	1 x RJ11 (12V)	
LAN Port	1 x RJ45 LAN (10 / 100)	
Video Port	1 x HDMI	
DC Power	1 x 12V DC Input	
Supported OS		
Windows	Windows 10 Enterprise (64bit only)	
Android	Android 5.1	
Dimensions & Weight		
Tablet (W x H x D)	265 x 182 x 11 mm, 0.662 Kg	